



Engineered products for the building industry
“Solutions without compromise”



Industry Knowledge

Products regularly updated to meet most current building practices, methods and technologies.



Flexible Manufacturing

Flexible manufacturing systems to provide customers with the most cost effective solutions.



In House Design

Technical expertise to design and manufacture products to exceed expectations.

Contents

General Information	3
Frame Details	4
Bulk Packs—Knockdown	5
Standard Non Rated Profiles	6
Sliding Door Profiles	7
Speed-Fix Profiles— Interior	8
Speed Fix Profiles— Exterior	9
Fire Rated Profiles	10
Frame Installation In Dry Walls	11
Frame Installation In Masonary Walls	12
Fire Rated In Dry Walls	13
Supa-Seal Frames	14
Architectural Profiles	15
Contact Information	16

ME METAL DOOR FRAMES

General Information And Terminologies

Metal Door Frames Specifications

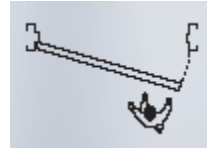
BF metal door frames are supplied complete with:

1. One pair of 100 x 75 x 2.5mm heavy duty zinc plated loose pin butt hinges projection welded into position.
2. One universal stainless steel striker plate positioned at standard location.
3. One pair of high density resilient rubber buffers fitted to the lock stile.
4. Removable spreader bars.
5. Ramset plates to each stile.
6. Ten of 3.00mm zinc plated galvanised wire ties.

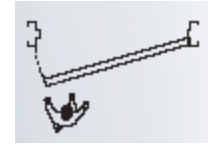
Optional Extras

1. Additional hinges.
2. Preparation for additional or special lock strikers.
3. Preparation for non-standard lock height
4. Reinforcement for surface mounted closers or preparation for concealed closers.
5. Preparation for screw fixed hinges.
6. Tube fixing for bolting of frames to existing walls.
7. Individual wrapping.
8. Supply of stud clips or quick-fix brackets.

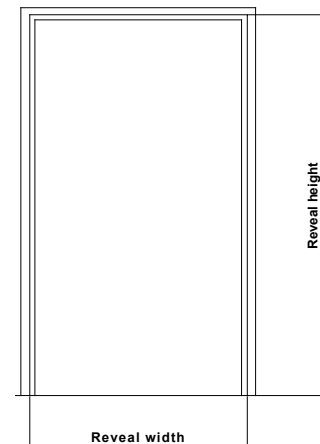
Handing Details



LEFT HAND



RIGHT HAND



Standard Heights:
2055 and
2065

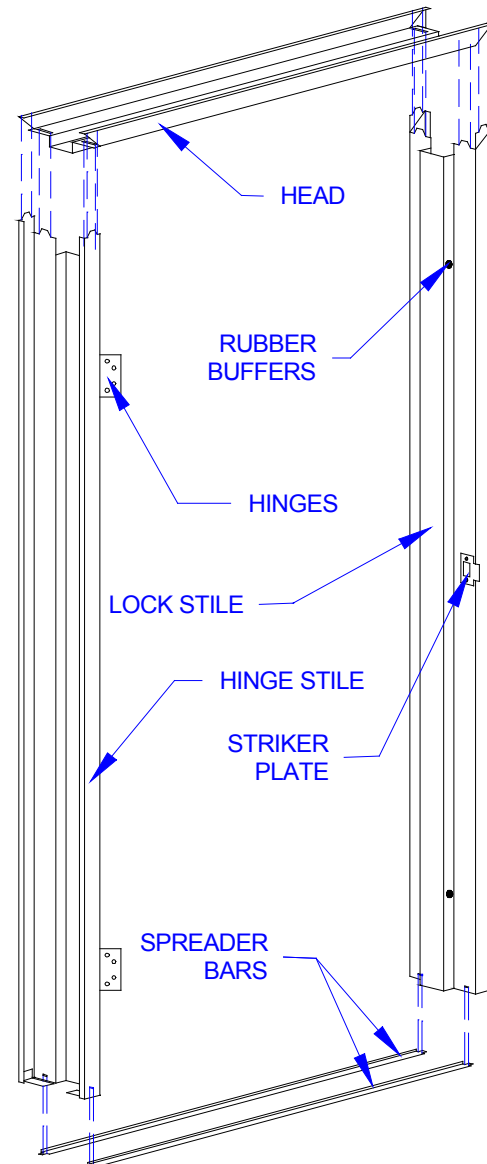
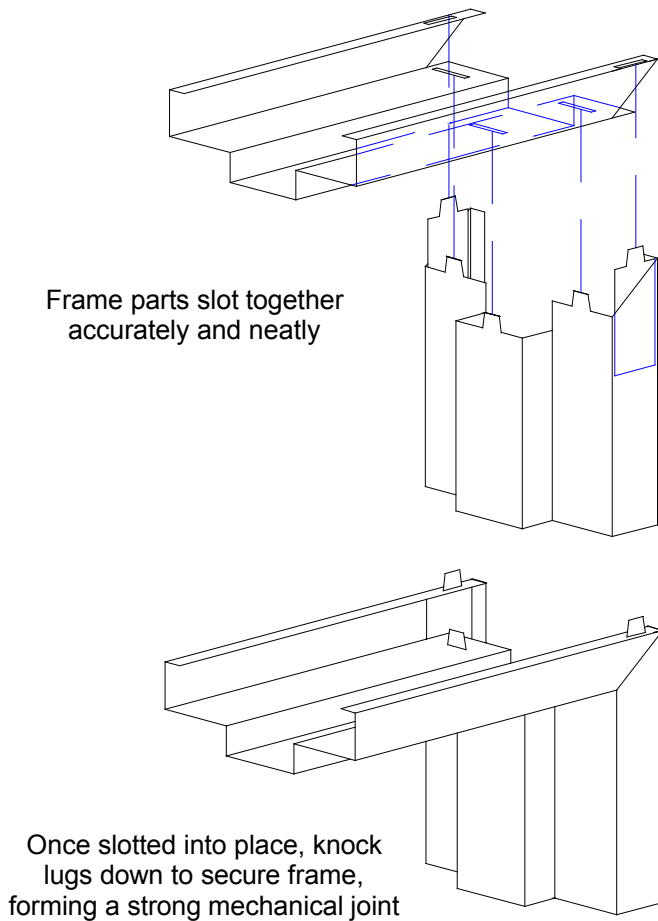
Standard Widths:

SINGLES	PAIRS	SLIDERS
424		
524		
624	1246	690 (720 door)
724	1446	740 (770 door)
774	1546	790 (820 door)
824	1646	890 (920 door)
874	1846	
924		
974		
1024		
1224		

BF METAL DOOR FRAMES

Frame Details

All **BF** metal Door frames are supplied with fully engineered “Slot and Tab” corner connection methods. This ensures that the highest level of accuracy and mechanical strength is achieved. Frames can be site assembled or factory assembled and welded for additional strength and improved aesthetics.



Hardware Packs

BF metal door frames can be supplied in “Hardware Packs”. The frames are pre-packed in convenient strapped bundles for the DIY market.

BF METAL DOOR FRAMES

“Bulk Pack” Knock Down Frames

BF “Bulk Pack” knock down frames are supplied in larger bundles ideally suited for major distributors. The packs contain common profile, hand and type of products ready to load into customer’s racking.

Pack quantities vary depending on profiles (please refer to **BF** profile packing chart).



Convenient sized packs allow for maximum container usage, easy unloading, stacking and transport.

Specially designed transport bundles are used where long distance road transport will occur.



BF METAL DOOR FRAMES

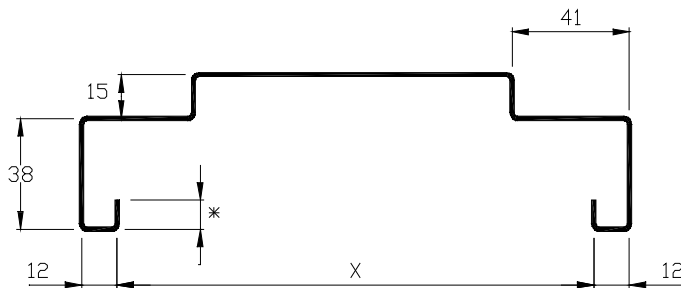
Standard Non-Rated Door Frame Profiles

“N” denotes “non fire-rated” for standard wall applications and door thickness.

“NM” denotes “non fire-rated” for standard wall applications for heavy duty door thickness.

The numerical values thereafter denotes the door frame throat dimension
ie N114 = non rated 114mm throat. NM114 = non rated maxi 114mm throat.

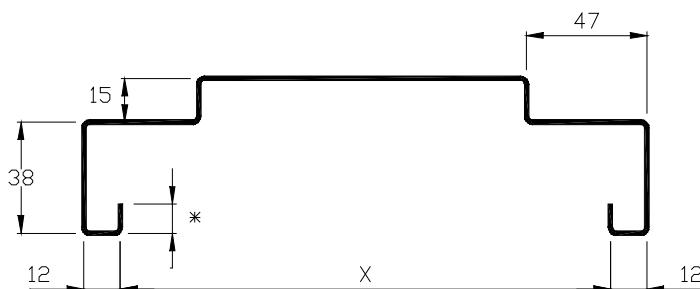
Standard Non Rated Mini To suit doors up to 38mm thickness



- 1.1 mm Zinc-Coated steel.
- Rebate to suit doors up to 38 mm thick.
- Throat dimension 'X' is variable to suit wall thickness.
- 2 Heavy Duty 100 x 75 x 2.5mm loose pin zinc plated hinges.
- 1 universal striker.

N86, N93, N102, N114, N120, N123, N145, N193, N230

Standard Non Rated Maxi To suit doors up to 44mm thickness



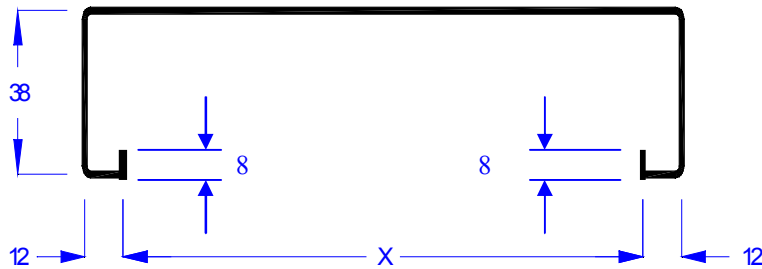
- 1.1 mm Zinc-Coated steel.
- Rebate to suit doors up to 44 mm thick.
- Throat dimension 'X' is variable to suit wall thickness.
- 2 Heavy Duty 100 x 75 x 2.5mm loose pin zinc plated hinges.
- 1 universal striker.

NM93, NM102, NM114, NM120, NM123, NM145, NM153, NM193, NM230

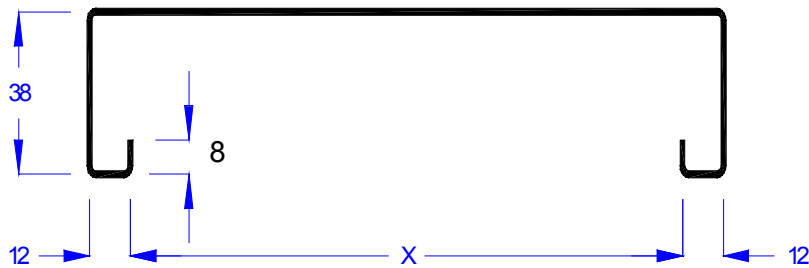
BF METAL DOOR FRAMES

Sliding Door Frames

These profiles are designed to offer clean non rebated finish frames to sliding door applications.



SD 93
X= 93mm



SD 114
X = 114mm

- 1.1 mm Zinc-Coated steel.
- Throat dimension 'X' is variable to suit specific wall.
wall thickness.

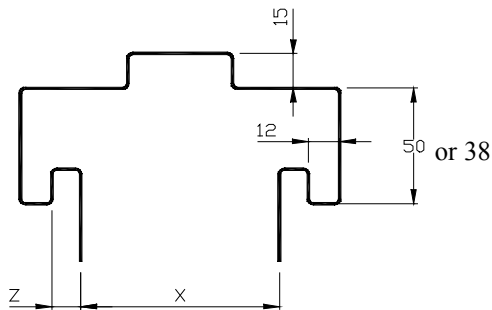
BF METAL DOOR FRAMES

Speed-Fix Door Frames

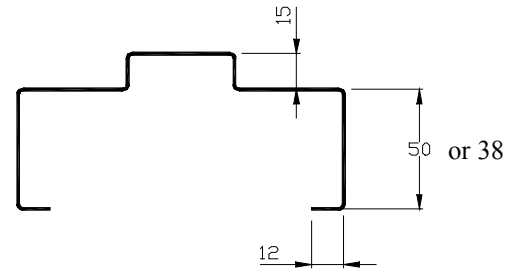
Interior Applications

Suitable for stud and masonry wall applications

A specially designed frame for fast installation offering superior strength and clean finishing.



Stile Profile



Head Profile

- 1.1 mm Zinc-Coated steel.
- Rebate to suit doors up to 38 mm thick.
- Throat dimension 'X' is variable to suit wall thickness.
- Dimension 'Z' variable to suit wall lining thickness
- 1 universal striker.
- 2 heavy duty loose pin zinc plated hinges.

N6410, N6413

N7610, N7613

N9210, N9213

Three Steps To Easy Installation

Note: For wall opening size add following dimensions to door size

38mm Architrave

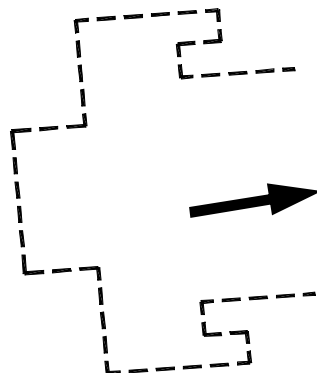
Height : add 75mm
Width : Add 80mm

50mm Architrave

Height : Add 90mm
Width : Add 90mm

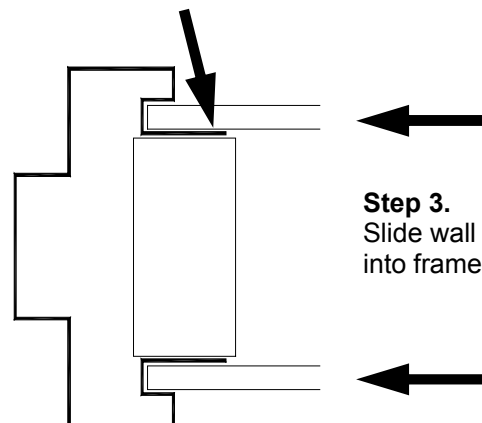
Step 1.

Joggle assembled frame into existing opening.



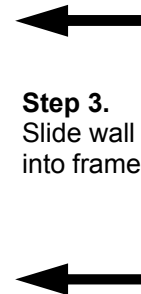
Step 2.

Fix leg of frame to wall through pre-punched fixing holes



Step 3.

Slide wall lining into frame pocket



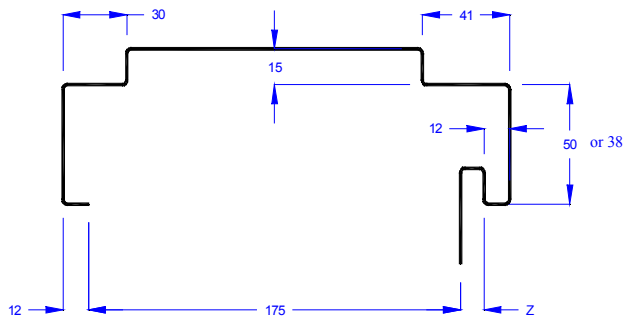
BF METAL DOOR FRAMES

Speed-Fix Door Frames

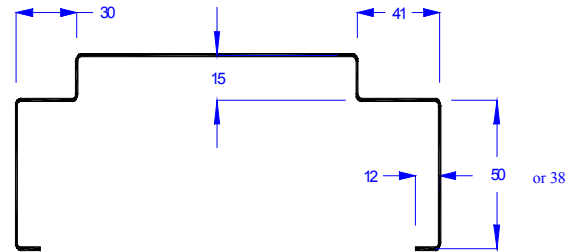
Exterior

Suitable for brick veneer applications

A specially designed frame for fast installation offering superior strength and clean finishing.



Stile Profile



Head Profile

- 1.1 mm Zinc-Coated steel.
- Rebate to suit doors up to 38 mm thick.
- Dimension 'Z' variable to suit wall lining thickness.
- 2 Heavy Duty 100 x 75 x 2.5mm loose pin zinc plated hinges.
- 1 universal striker.

Four Steps To Easy Installation

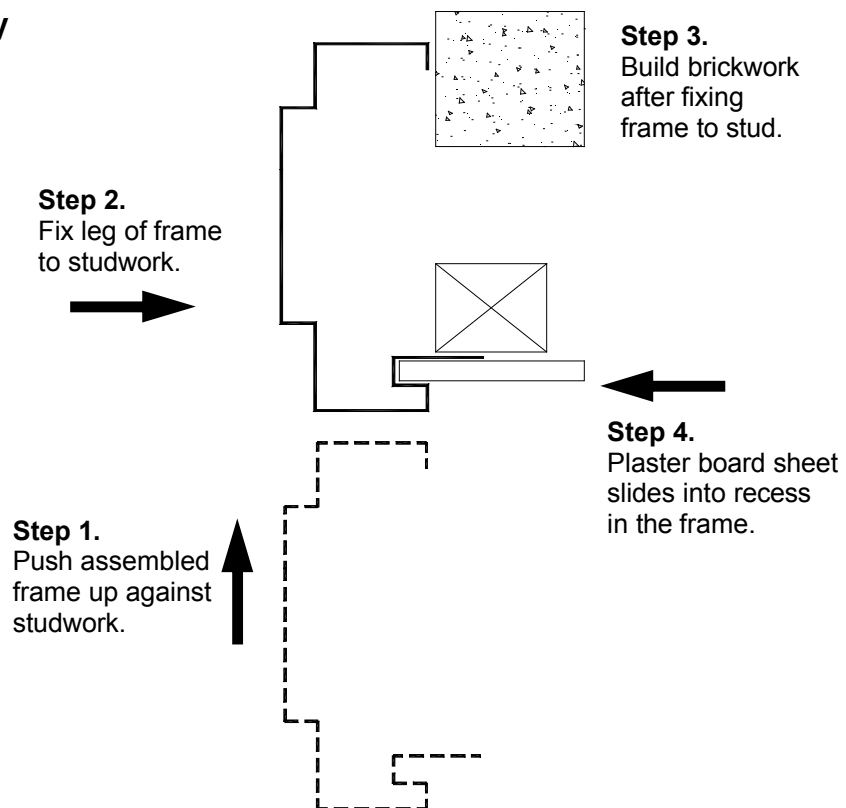
Note: For wall opening size add following dimensions to door size.

38mm Architrave

Height : add 65mm
Width : Add 90mm

50mm Architrave

Height : Add 80mm
Width : Add 110mm

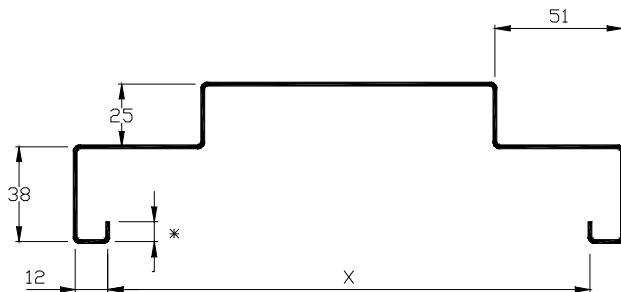


BF METAL DOOR FRAMES

Fire-Rated Door Frames

Available in the full range of **BF** profiles to suit Maxi (48mm thick) and Mini (38mm thick) Fire-Rated Doors.

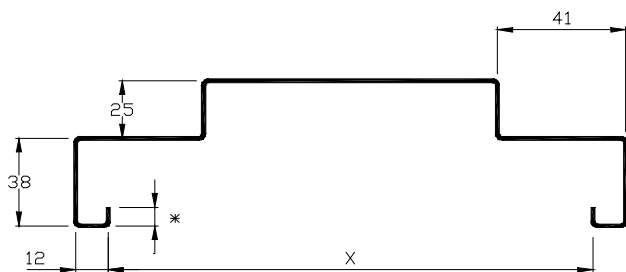
Maxi fire door frames for fire rated doors up to 48mm



- 1.4mm Zinc-Coated steel.
- Rebate to suit maxi fire doors up to 47mm thick.
- Throat dimension 'X' is variable to suit wall thickness.
- 2 Heavy Duty 100 x 100 x 2.5mm loose pin zinc plated hinges as standard.

FM114, FM 120, FM123, FM145, FM153, FM193

Mini fire door frames for fire rated doors up to 38mm thick



- 1.1mm zinc-Coated steel.
- Rebate to suit mini fire doors up to 38mm thick.
- Throat dimension 'X' is variable to suit wall thickness.
- 2 Heavy Duty 100 x 75 x 2.5mm loose pin zinc plated hinges as standard.
- 1 universal striker.

F 93, F102, F114, F 120, F123, F145, F 153, F193

BF METAL DOOR FRAMES

Frame Fixing Details For Dry Walls

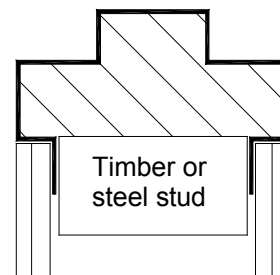
A complete range of various options for fixing of frames into dry/stud wall constructions.

Partition Dry Wall Fire Door Frames

This is the partition profile dry wall fire door frame.

Suitable for use in non rated and fire-rated plasterboard partition walls.

Steel or timber studs may be used.

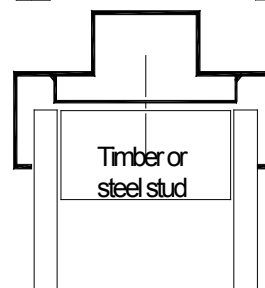


Standard Frame with Quick-Fix Bracket

This is the preferred method for concealed fixing of frames into dry wall applications where high traffic and additional strength is required.

Suitable for use in non-rated and fire-rated stud wall configurations.

Steel or timber studs may be used.

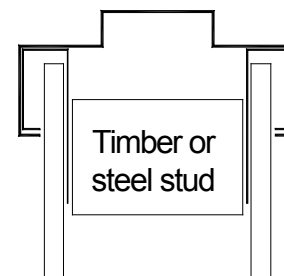


Standard Frame with Stud Clip Fixing

This is the traditional method of concealed fixing of frames into dry wall applications where standard traffic and conditions are experienced.

Suitable for use in non-rated stud wall applications only. Stud Clips can be supplied to suit 0mm, 6mm, 10mm, 13mm and 16mm wall linings.

Steel or timber studs may be used.

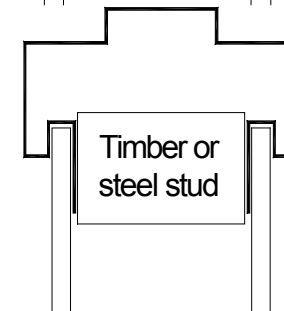


Interior Speed-Fix Frames



This new design allows incorporates a wall lining pocket and fixing flange design within the frame profile to enable complete concealed fixing and achieving maximum strength.

Steel or timber studs may be used.

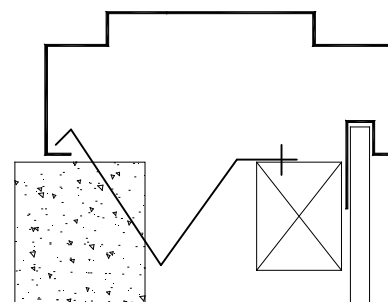


Exterior Residential Frames for use with Brick Veneer Walls

This new innovation allows plasterboard edges to be concealed within the door frame.

Suitable for use only in non-rated exterior brick veneer partition walls.

Steel or timber studs may be used.



BF METAL DOOR FRAMES

Frame Installation Details For Masonry Walls

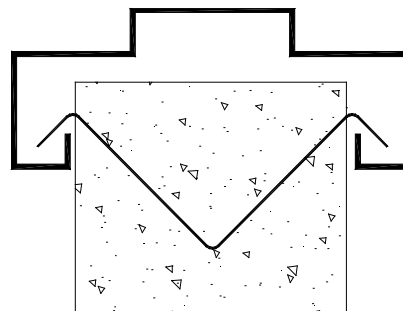
Brick and Block Work Walls

Standard profiles.

10 only 3.00 ZP Wire Ties per frame (5 per stile)

Suitable for use in non-rated and fire-rated brick and block work walls (where tested).

For maximum strength and stability frames should be back filled.

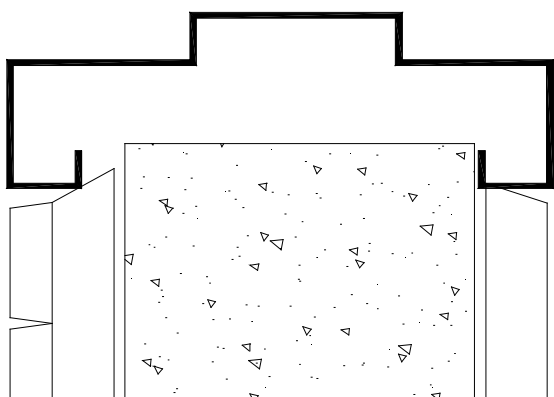
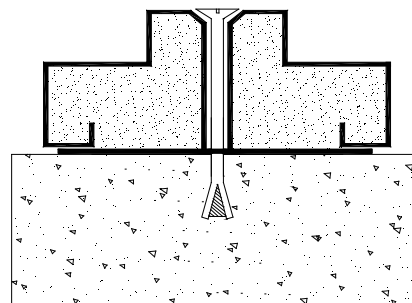


Concrete Walls and Retrofit Installations

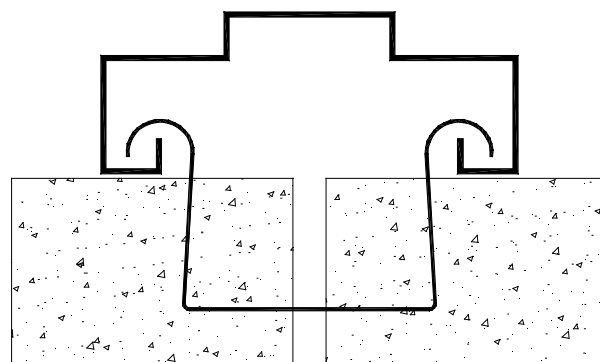
Standard profiles.

Minimum of 4 of 10mm countersunk dyna-bolts per stile

Suitable for use in non-rated and fire-rated new concrete and previously existing walls (where tested).

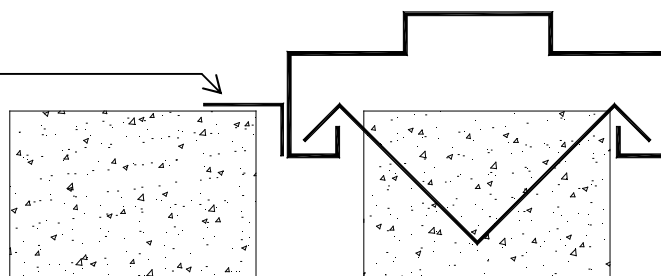


Render and tile option for brick/block wall .



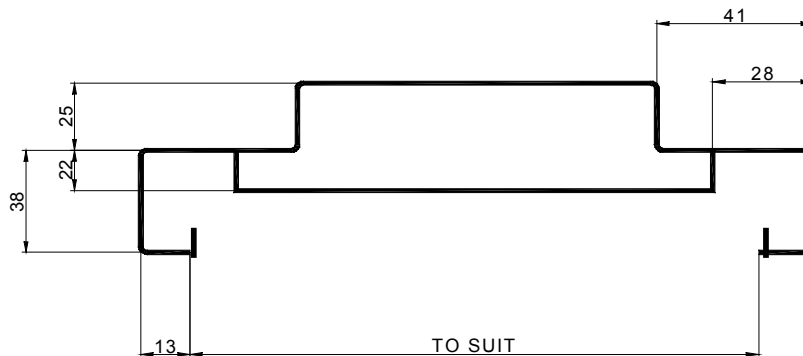
Double brick or block work using block ties for frames over 145 mm throat size

Cavity wall application using 30 x 19 or 64 x 19mm cavity weather filler angle.

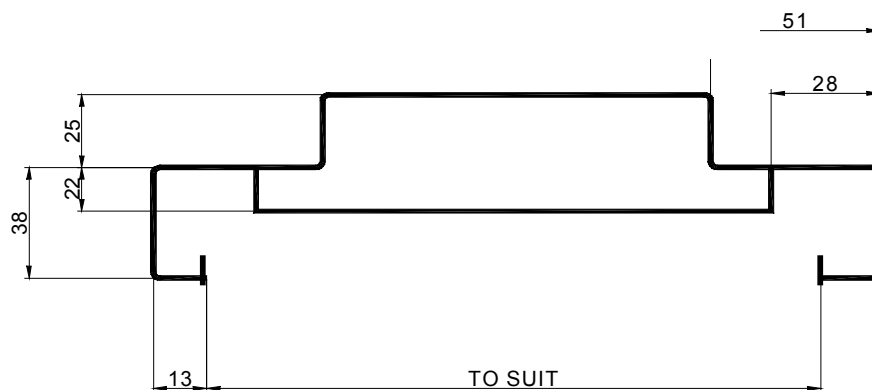


BF METAL DOOR FRAMES

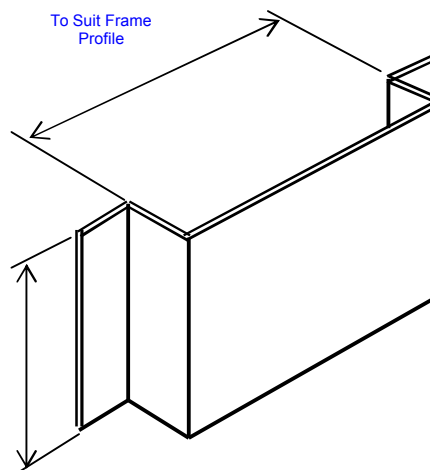
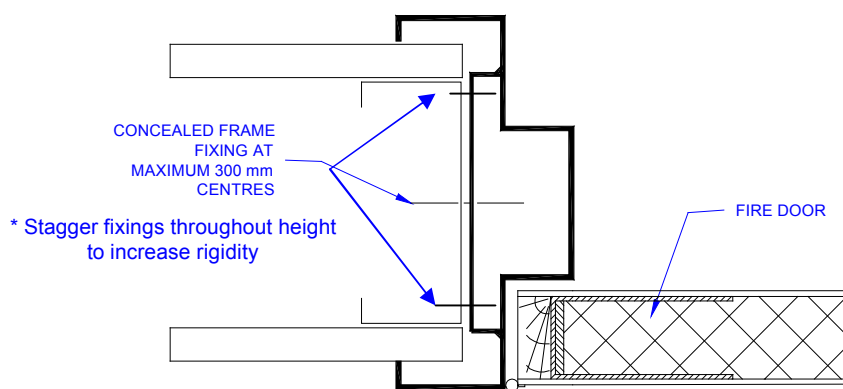
Fire Door Frames For Dry Walls "Quick-Fix" Bracket Details



Mini Door Frame



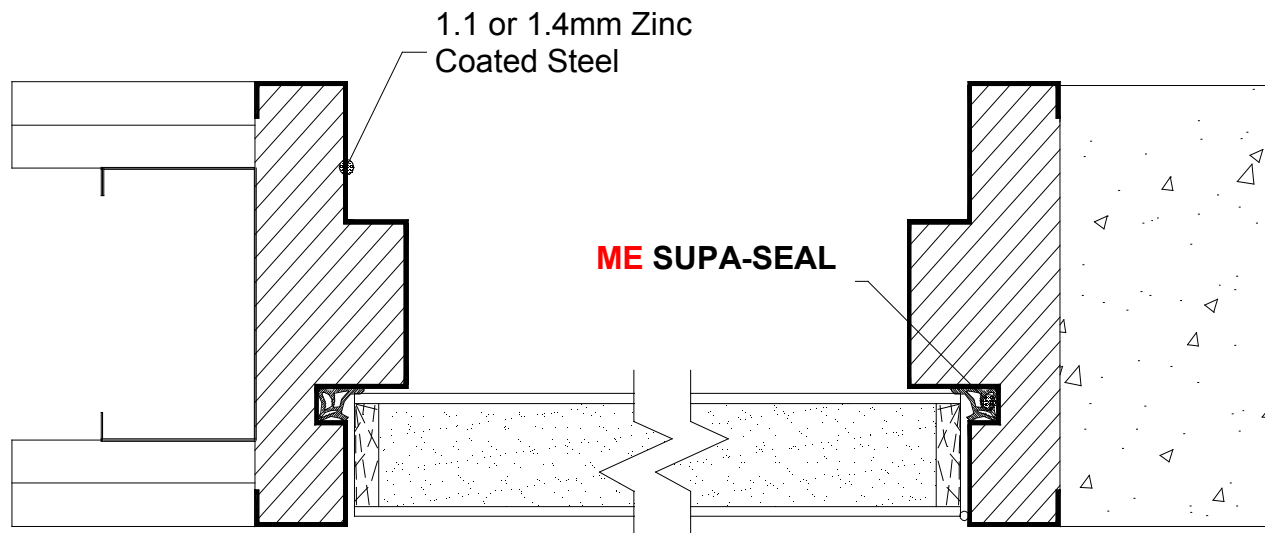
Maxi Door Frame



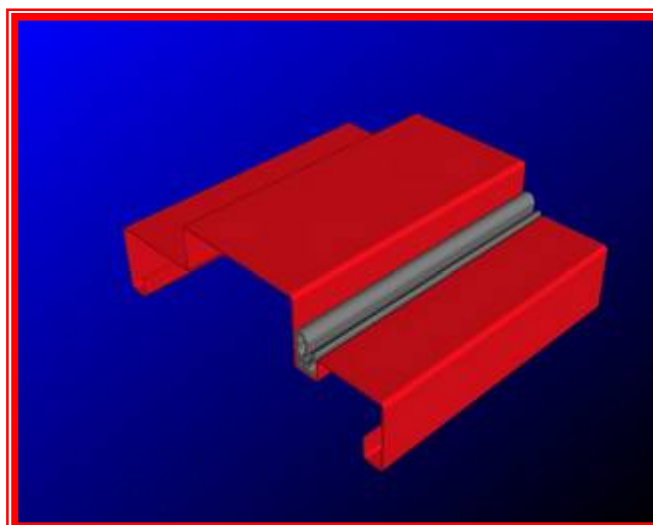
Betaframes "Quickfix" Bracket
13

BF METAL DOOR FRAMES

BF “SUPA-SEAL” Door Frames These frames offers a fully incorporated high density Silicone seal within the frame to provide an excellent level of dust, weather, smoke and sound resistance. The seal is concealed within the pocket of the door frame for maximum service life. This option can be supplied on all profiles at time of order.



- Suitable for doors up to 47 mm thick.
- The **BF “SUPA-SEAL”** provides a complete insulating barrier around the head and stiles of the door frame
- When used in conjunction with appropriate threshold seals, the door system offers excellent acoustic qualities and smoke resistance



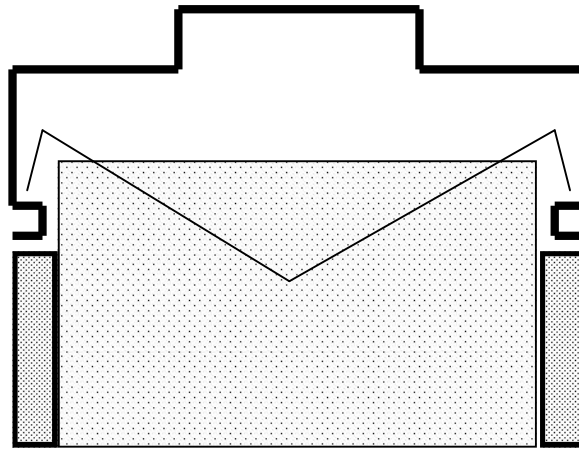
BF METAL DOOR FRAMES

Architectural Profiles

BF can offer a full design and supply service for any profile door/window frame configurations in a variety of materials including mild steel, zinc coated, galvanized or stainless steel. Please see below for a sample of the various profiles to suit specific applications. Send your re-quirements to our sales department for assistance in design.

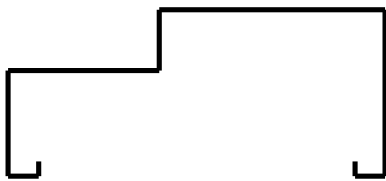
Shadow-Line

Offering a truly Architectural finish to rendered wall junctions.



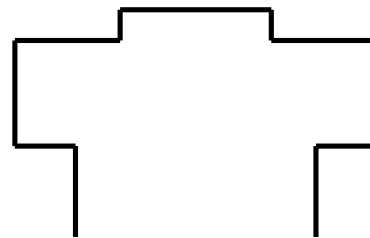
Single Rebate

A slim-line alternative for dry wall and masonry applications.



Partition Profile

Offers a fast a high strength fixing to dry wall structures.



Betaframes Pty. Ltd.

Address

Unit B, 26-30 Tepko Rd. Terrey Hills, NSW 2084
Tel +61 2 99861668 Fax +61 2 99861678

Sales

dirk@betaframes.com.au
www.betaframes.com.au